

## 日常维护 Daily Maintenance

手动加油是在缝纫机最初开始使用时，或使用了有一个月后，请往图示位置加一点点油脂。

Manual refueling is when the sewing machine is first in use ,or it has been used for a month.Please add a little grease to the slide seat.

加油时，需打开侧盖的盖子,然后向机壳内腔处加入油脂。

When refueling ,you need to open the lid of the side cover ,and then add grease to the inner chamber of the shell.

加油时，需打开滑杆座侧边的盖子，然后向滑杆套处加入一点油脂即可。

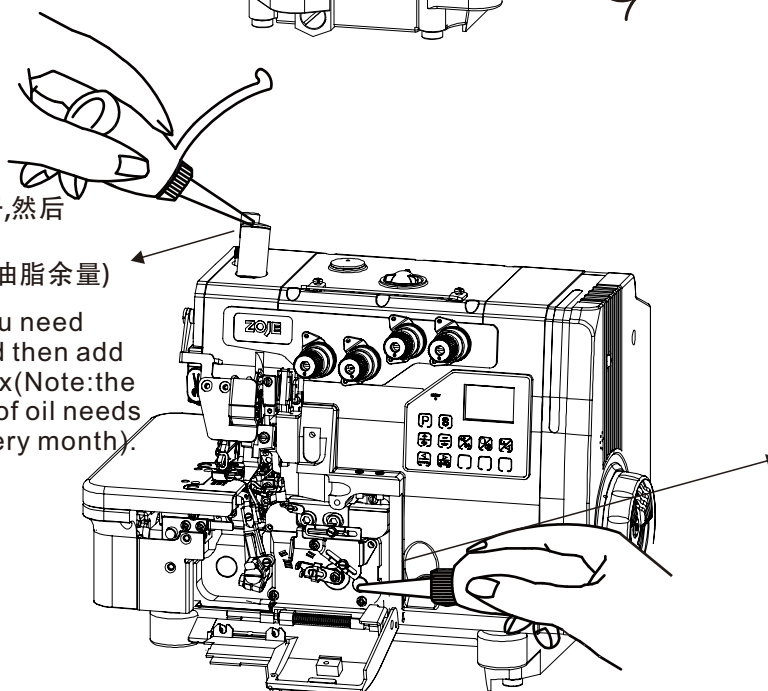
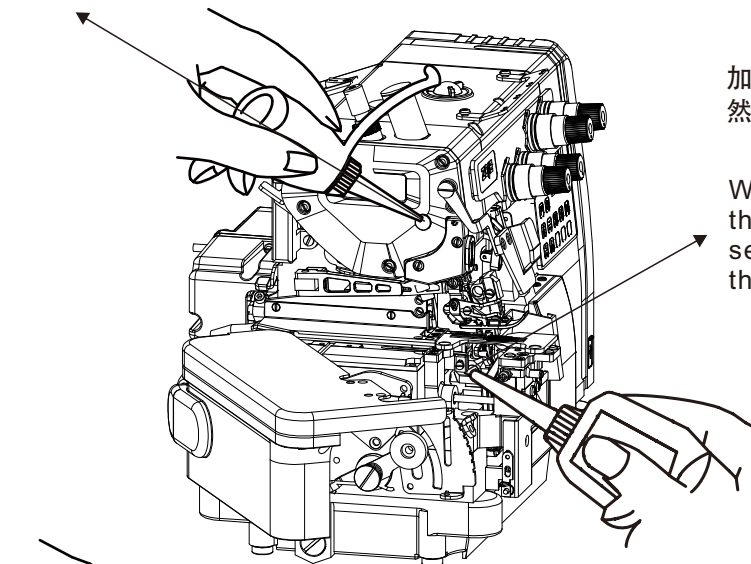
When refueling ,you need to open the lid on the side of the sliding rod seat ,and then add a little grease to the sliding rod sleeve.

加油时，需打开盖子,然后向油盒中加入油脂。  
(注意:需每个月确认油脂余量)

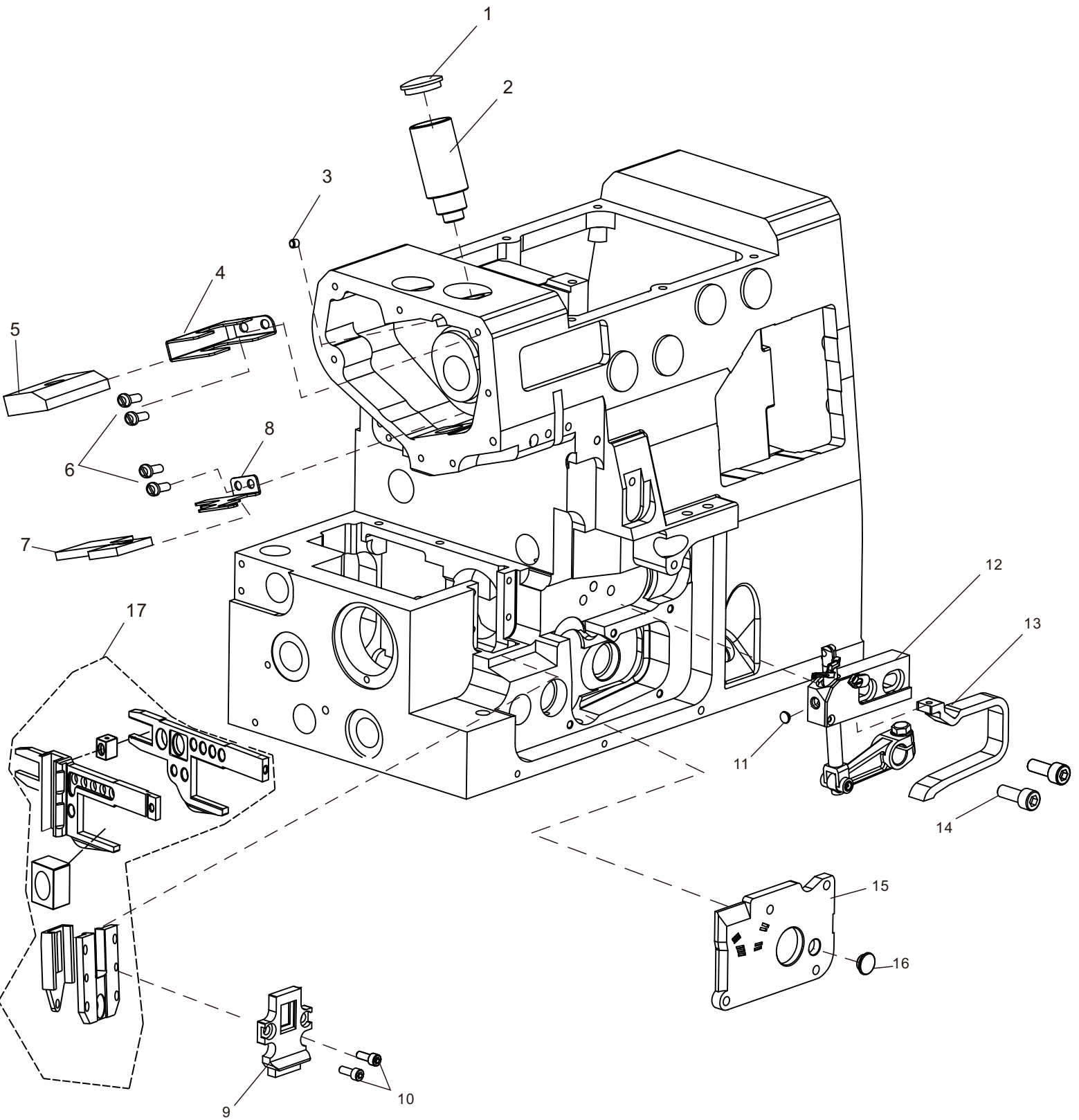
When refueling ,you need to open the lid ,and then add grease to the oil box(Note:the remaining amount of oil needs to be confirmed every month).

加油时，需打开盖板的盖子，然后向机壳内腔加入油脂。

When refueling ,you need to open the lid of the cover , and then add grease to the inner chamber of the shell.



14. 润滑部件(B8510W)/LUBRICATION ASSEMBLY(B8510W)



#### 14.润滑部件(B8510W)/LUBRICATION ASSEMBLY(B8510W)

序号 No.	件号 Parts No.	名称	Description	数量 QT.
1	10028148	橡皮塞	rubber plug	1
2	10089427	针杆供油盒	oil supply box	1
3	10011314	螺钉	screw	1
4	10089426	针杆毛毡固定板	felt fixing plate	1
5	10089425	针杆上毛毡	the felt above	1
6	10004171	螺钉	screw	4
7	10089424	针杆套毛毡压板	felt pressure plate	1
8	10089423	针杆套毛毡	the felt below	1
9	10089828	外油封架	screw	1
10	10037434	螺钉	screw	2
11	10089432	滑杆油塞	oil plug	1
12	10089578	上弯针滑杆组件(无油)	up-bending needle sliding rod	1
13	10089438	滑杆润滑长毛毡	felt	1
14	10009008	螺钉M6×16	screw M6×16	2
15	10089442	上弯针架盖	cover plate	1
16	10028146	橡胶塞	rubber plug	1
17	10089843	牙架导轨组件	tooth frame guide rail assembly	1