



自动化系列  
AUTOMATION SERIES



缝制整烫一次完成、一人多台操作  
Integrated Sewing & Pressing, Multi-Machine Operation

# ZJ-UA-A9200L-ZBJ-WB8

自动折边机  
AUTOMATIC FOLDING MACHINE

### 提高生产效率

可保证机头连续运行工作。  
操作工只需放置面料，按动按钮开关，即可自动完成折边、缝制、整烫、收料等一系列动作，大大提高生产效率近80%

### Improve production efficiency

It can ensure continuous operation of the machine head.  
The operator only needs to place the fabric and press the button switch to automatically complete a series of actions such as folding, sewing, ironing, and receiving, greatly improving production efficiency by nearly 80%

### 工序时间、生产效率的比较

折边工序		传统用机		ZJ-UA-A9200L-ZBJ-WB8	
缝短袖卷边	6秒	13秒	7秒	延续缝	
整烫	7秒				
生产量	1700片		3000片		

注:按8小时75%算

### 自动折边机的优势

采用机械定性折边，缝制整烫一次性完成，平行叠放，平整不乱。  
对操作工没有技术要求，简单培训就可上岗。  
一人操作多台，节约人工与成本。

### The advantages of automatic edge folding machines

Using mechanical qualitative folding, sewing and ironing are completed in one go, and stacked in parallel, Flat and not disorderly.  
There are no technical requirements for operators, and simple training is sufficient for them to take up their positions  
One person operates multiple machines, saving labor and costs.

### Comparison of process time and production efficiency

Folding process	Traditional machine		ZJ-UA-A9200L-ZBJ-WB8
Sew short sleeved hem	6 seconds	13 seconds	Continue sewing for 7 seconds
Ironing	7 seconds		
Production volume	1700 pieces		3000 pieces

Note: Calculated at 75% for 8 hours

操作面板是采用直观的液晶面板  
The operation panel adopts an intuitive LCD panel

操作面板是采用液晶面板  
缝制数据的输入、款式通过操作面板就可以实现可用USB接口导入缝制线迹档案及对机器数据的导入和导出。

The operation panel adopts a LCD panel  
The input and style of sewing data can be achieved through the operation panel by using a USB interface to import sewing thread files and import and export machine data.



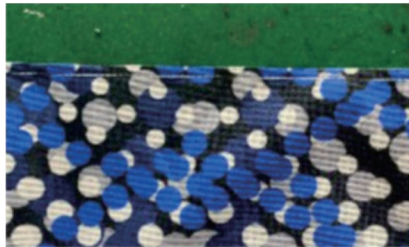
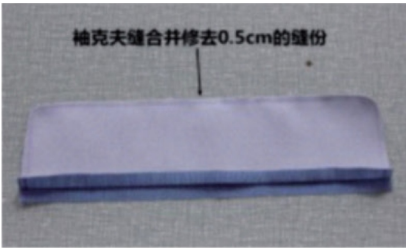
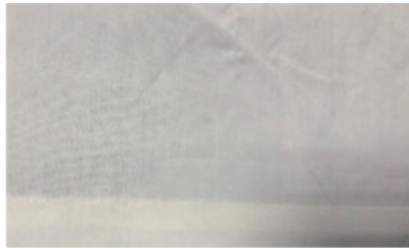
收料方式  
Material receiving method

采用步进马达加连杆压布方式收料，  
优点是收料整齐，不用二次整理。  
The advantage of using a stepper motor and connecting rod cloth pressing method for material collection is that the collection is neat and does not require secondary sorting.



使用用途  
Usage

可用于服装、衬衫、袋口三折边短袖口、箱包上的二折边，三折边工艺此机器用途广，即使是小批量生产也能灵活的应对  
This machine can be used for double folding on clothing, shirts, pocket cuffs, short cuffs, and bags.  
The triple folding process has a wide range of uses and can flexibly handle even small batch production



技术参数  
Technical parameter

机种名Model name	ZJ-UA-A9200L-ZBJ-WB8
搭载机头Equipped with a handpiece	A9200L
最快缝制速度Fastest sewing speed	4000转/分 ( rpm)
缝制范围Sewing range	500 mm
最大针距长度Maximum needle pitch length	5 mm
使用针（出货时的型号） Needle used (shipped model)	DBx1/11#
面线断线检测装置Surface line break detection device	松下对射式感应器Panasonic opposed sensor
堆叠片空间高度Stack space height	150 mm
缝制模式Sewing mode	10种
机器尺寸(长*宽*高 ) Machine dimensions (length, width, height)	2100*950*1150mm

UA：梭织类                      ZBJ：折边机  
UA: Woven Fabrics            ZBJ: Folding Machine